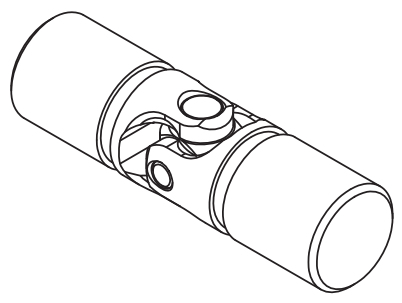
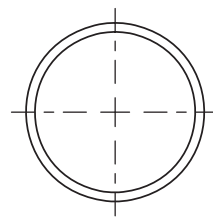
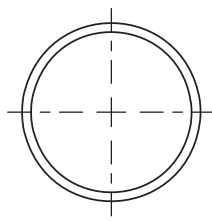
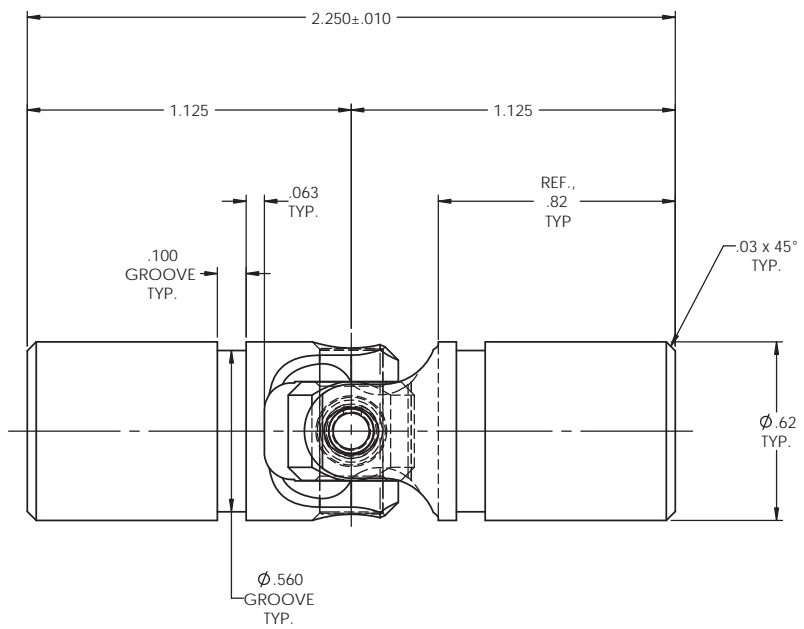


REVISIONS				
ZONE	REV.	DESCRIPTION	DATE	APPROVED

# INFORMATION IN THIS DRAWING PROVIDED FOR REFERENCE ONLY



SCALE 2 : 1



NOTE(S), UNLESS OTHERWISE SPECIFIED.

- (1) UNIVERSAL JOINT IS MARKED w/ "BELDEN" LOGO, PART NUMBER / DRAWING NUMBER, REVISION LEVEL (IF ANY), DATE OF MANUFACTURE (MO/YR), AND BELDEN JOB NUMBER.
- (2) UNIVERSAL JOINT IS LUBRICATED w/ LUBRIPLATE 1200-2, NLGI GRADE 2, AW/EP, LITHIUM GREASE OR EQUIVALENT.
- (3) UNIVERSAL JOINT IS CAPABLE OF OPERATING AT ANY ANGLE UP TO AND INCLUDING 45°.
- (4) UNIVERSAL JOINT HAS STANDARD GROOVES TO ACCEPT INSTALLATION OF PROTECTIVE COVER (BOOT). BOOT AVAILABLE SEPARATELY. REFER TO BELDEN CATALOG, WEBSITE, OR CONTACT BELDEN SALES.
- (5) REFER TO BELDEN CATALOG, WEBSITE, OR CONTACT BELDEN SALES FOR TORQUE CAPACITY.
- (6) THIS DRAWING REPRESENTS A STANDARD BELDEN ITEM. CUSTOM UNIVERSAL JOINTS ARE AVAILABLE UPON REQUEST. PLEASE CONTACT BELDEN SALES.

**BELDEN PART NUMBER: UJ-SS625x00**

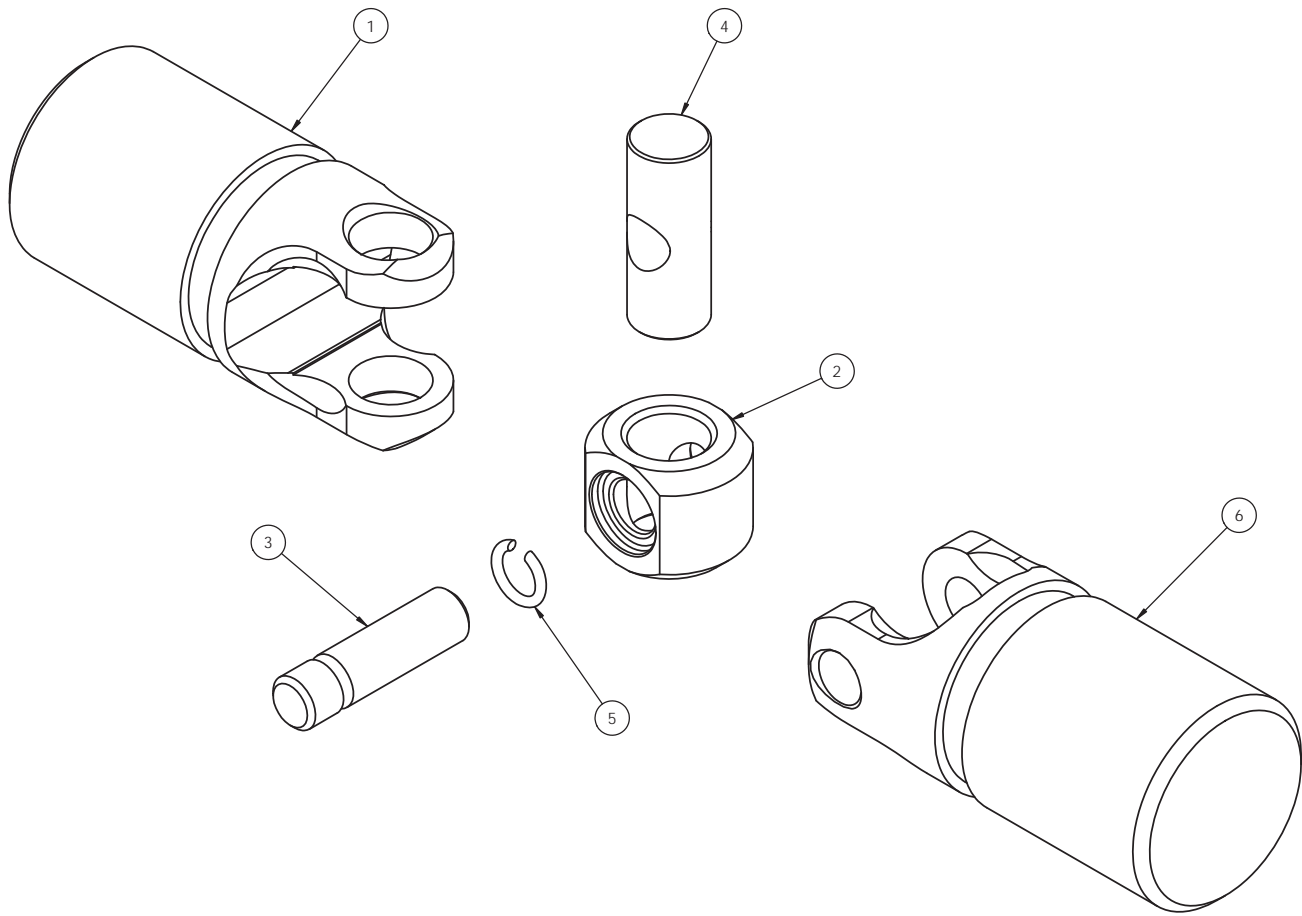
DO NOT SCALE DRAWING

UNLESS OTHERWISE SPECIFIED CHAMFER ALL HOLES BREAK ALL SHARP CORNERS DE-BURR ALL FEATURES  TURNED SURFACES: $\sqrt{6.3}$ MILLED SURFACES: $\sqrt{1.25}$  PROPRIETARY AND CONFIDENTIAL THE INFORMATION CONTAINED IN THIS DRAWING IS THE SOLE PROPERTY OF BELDEN INC. NO COPY OR PART OF ANY REPRODUCTION IN PART OR AS A WHOLE WITHOUT THE WRITTEN PERMISSION OF BELDEN INCORPORATED IS PROHIBITED.	STANDARD TOLERANCES, UNLESS OTHERWISE SPECIFIED  DIMENSIONS ARE IN INCHES [mm]	MATERIAL: STAINLESS STEEL  HEAT TREAT: SEE DETAIL DRAWINGS  FINISH: NONE	<table border="1"> <tr> <th>NAME</th> <th>DATE</th> </tr> <tr> <td>JP</td> <td>11JAN12</td> </tr> <tr> <th>CHECKED</th> <th>DATE</th> </tr> <tr> <td>RNK</td> <td>11JAN12</td> </tr> <tr> <th>ENG APPR.</th> <th>DATE</th> </tr> <tr> <td>RNK</td> <td>11JAN12</td> </tr> <tr> <th>MFG APPR.</th> <th>DATE</th> </tr> <tr> <td> </td> <td> </td> </tr> <tr> <th>DATE</th> <th> </th> </tr> <tr> <td> </td> <td> </td> </tr> </table>	NAME	DATE	JP	11JAN12	CHECKED	DATE	RNK	11JAN12	ENG APPR.	DATE	RNK	11JAN12	MFG APPR.	DATE			DATE				Belden Incorporated <a href="http://www.beldenuniversal.com">www.beldenuniversal.com</a>  TITLE: <b>ASSEMBLY, UNIVERSAL JOINT</b>
	NAME	DATE																						
	JP	11JAN12																						
	CHECKED	DATE																						
RNK	11JAN12																							
ENG APPR.	DATE																							
RNK	11JAN12																							
MFG APPR.	DATE																							
DATE																								
ANGULAR MACHINED: $\pm 1.0^\circ$ FRACTIONAL: $\pm 0.15$ TWO PLACE DECIMAL: $\pm 0.10$ THREE PLACE DECIMAL: $\pm 0.05$ FOUR PLACE DECIMAL: $\pm 0.005$ CONCENTRICITY: 0.005 T.I.R.	ALL HOLES TO BE LOCATED ON CENTERLINE (C) WITHIN .005" T.I.R. INTERPRET GEOMETRIC TOLERANCES I.A.W. ANSI Y14.5M-1992	SIZE: <b>C</b> DWG. NO.: UJ-SS625x00 SCALE: 3:1   WT (Lbs): 0.173   SHEET 1 OF 2	REV:																					

BOM Table			
ITEM NO.	PART NUMBER	DESCRIPTION	UJ-SS625x00/QTY.
1	SSY625LHx00	YOKE, LARGE HOLE	1
2	SS625-2A	BLOCK	1
3	SS625-3A	SMALL PIN	1
4	SS625-5A	LARGE PIN	1
5	SS625-6A	RETAINING RING, STAINLESS STEEL	1
6	SSY625SHx00	YOKE, SMALL HOLE	1

REVISIONS				
ZONE	REV.	DESCRIPTION	DATE	APPROVED
-	-	See Sheet1	-	-

INFORMATION IN THIS DRAWING PROVIDED FOR REFERENCE ONLY



DO NOT SCALE DRAWING

UNLESS OTHERWISE SPECIFIED CHAMFER ALL HOLES BREAK ALL SHARP CORNERS DE-BURR ALL FEATURES  TURNED SURFACES: $\sqrt{6.3}$ MILLED SURFACES: $\sqrt{125}$  PROPRIETARY AND CONFIDENTIAL THE INFORMATION CONTAINED IN THIS DRAWING IS THE SOLE PROPERTY OF BELDEN INCORPORATED. ANY REPRODUCTION IN PART OR AS A WHOLE WITHOUT THE WRITTEN PERMISSION OF BELDEN INCORPORATED IS PROHIBITED.	STANDARD TOLERANCES, UNLESS OTHERWISE SPECIFIED  DIMENSIONS ARE IN INCHES (mm)	MATERIAL STAINLESS STEEL	NAME JP	DATE 11 JAN 12	Belden Incorporated <a href="http://www.beldenuniversal.com">www.beldenuniversal.com</a>  TITLE: <b>ASSEMBLY,          UNIVERSAL JOINT</b>	
	ANGULAR MACHINED: $\pm 1.0^\circ$ FRACTIONAL: $\pm 0.015$ TWO PLACE DECIMAL: $\pm 0.010$ THREE PLACE DECIMAL: $\pm 0.005$ FOUR PLACE DECIMAL: $\pm 0.0005$ CONCENTRICITY: $0.0025$ T.I.R.	HEAT TREAT SEE DETAIL DRAWINGS	CHECKED RNK	NAME RNK		DATE 11 JAN 12
	ALL HOLES TO BE LOCATED ON CENTERLINE (C) WITHIN .005" T.I.R. INTERPRET GEOMETRIC TOLERANCES I.A.W. ANSI Y14.5M-1992	FINISH NONE	ENG APPR. MFG APPR.	COMMENTS		SIZE <b>C</b>
	DWG. NO. UJ-SS625x00	REV	SCALE: 4:1	WT (Lbs): 0.173		SHEET 2 OF 2