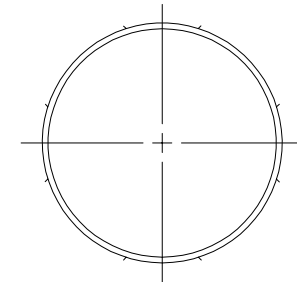
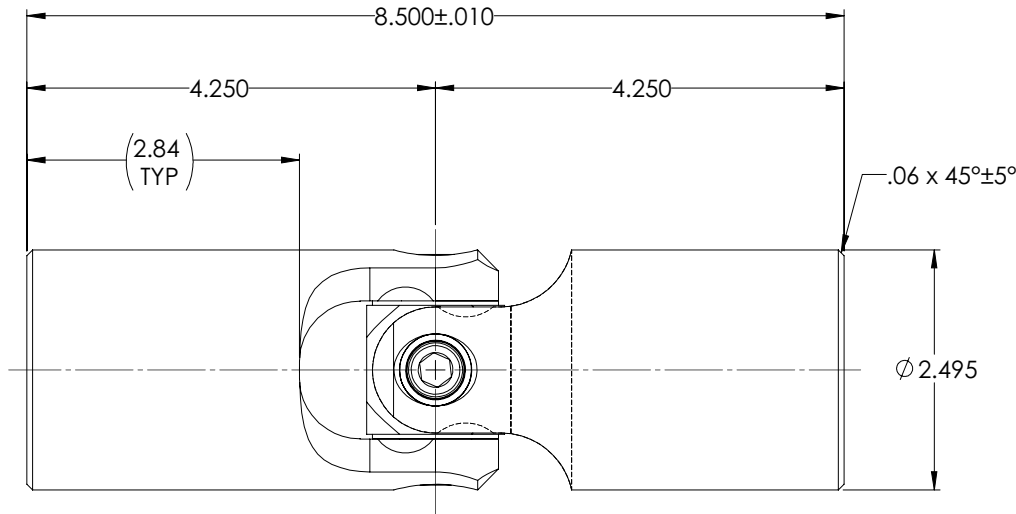
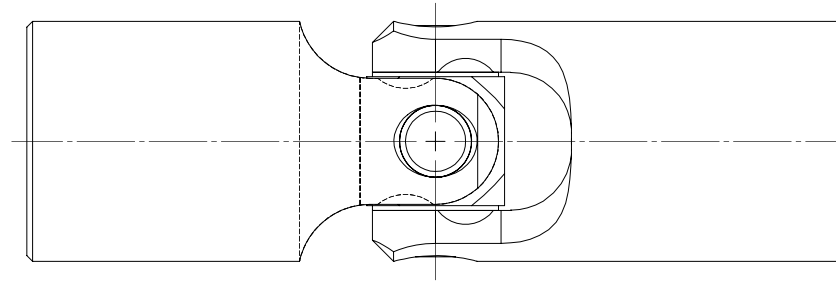


APPROVED

REVISIONS				
ZONE	REV.	DESCRIPTION	DATE	APPROVED

**INFORMATION IN THIS
DRAWING PROVIDED FOR
REFERENCE ONLY**



NOTE(s), UNLESS OTHERWISE SPECIFIED.

1 MARK ASSEMBLY w/ "BELDEN" LOGO, PART NUMBER, REVISION LEVEL (IF ANY), DATE OF MANUFACTURE (MO/YR), & BELDEN JOB No.

(2) FULLY SEAT 3/8-24 SOCKET HEAD CAP SCREW & TORQUE TO 30 FT-LBS.

(3) LUBRICATE UNIVERSAL JOINT w/ LUBRIPLATE PRODUCT No. 1200-2, NLGI GRADE 2, AW, LITHIUM GREASE OR EQUIVALENT.

(4) REF., MATERIAL: YOKES, BLOCK, PINS & S.H.C.S.: TYPE 316 STAINLESS STEEL.

DO NOT SCALE DRAWING

UNLESS OTHERWISE SPECIFIED CHAMFER ALL HOLES BREAK ALL SHARP CORNERS DE-BURR ALL FEATURES TURNED SURFACES: $\sqrt{63} / \sqrt{63}$ MILLED SURFACES: $\sqrt{125}$ PROPRIETARY AND CONFIDENTIAL THE INFORMATION CONTAINED IN THIS DRAWING IS THE SOLE PROPERTY OF BELDEN UNIVERSAL. ANY REPRODUCTION IN PART OR AS A WHOLE WITHOUT THE WRITTEN PERMISSION OF BELDEN UNIVERSAL IS PROHIBITED.	STANDARD TOLERANCES, UNLESS OTHERWISE SPECIFIED DIMENSIONS ARE IN INCHES [mm]	MATERIAL TYPE 316/316L STAINLESS STEEL	INITIALS DATE DRAWN RNK 17FEB11	BELDEN UNIVERSAL www.beldenuniversal.com TITLE: ASSEMBLY, UNIVERSAL JOINT	
	ANGULAR MACHINED: $\pm 1.0^\circ$ FRACTIONAL: $\pm .015$ TWO PLACE DECIMAL: $\pm .010$ THREE PLACE DECIMAL: $\pm .005$ FOUR PLACE DECIMAL: $\pm .0005$ CONCENTRICITY: $\pm .0025$ T.I.R.	HEAT TREAT NONE	CHECKED RNK 17FEB11 ENG APPR. RNK MFG APPR. QC APPR.		COMMENTS:
	ALL HOLES TO BE LOCATED ON CENTERLINE (C) WITHIN .005" T.I.R. INTERPRET GEOMETRIC TOLERANCES I.A.W. ASME Y14.5	FINISH NONE	SIZE DWG. NO. REV A UJ-SS2500-316 B		SCALE: 1:1 WT (Lbs): 10.402 SHEET 1 OF 2
	PROPRIETARY AND CONFIDENTIAL		COMMENTS:		