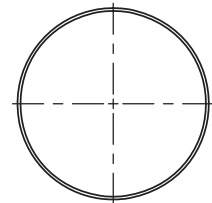
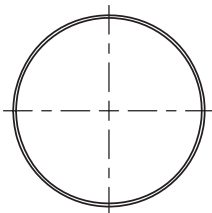
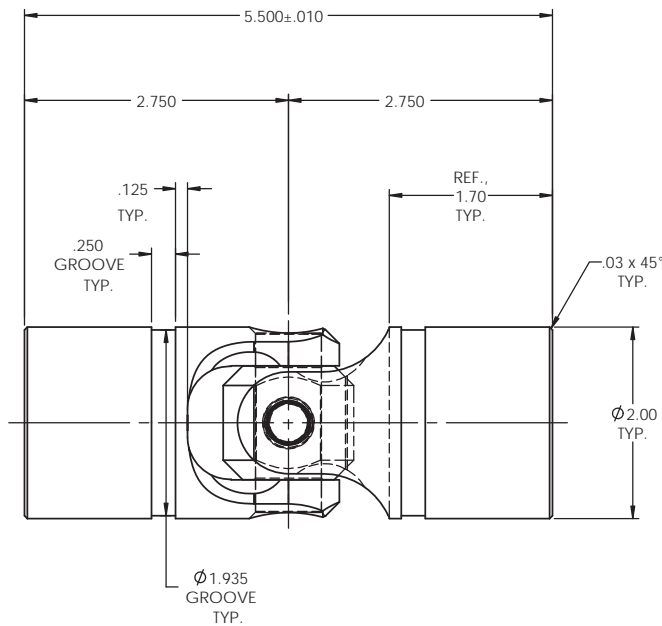


INFORMATION IN THIS DRAWING
PROVIDED FOR REFERENCE ONLY

| REVISIONS | | | | |
|-----------|------|-------------|------|----------|
| ZONE | REV. | DESCRIPTION | DATE | APPROVED |
| | | | | |



NOTE(S), UNLESS OTHERWISE SPECIFIED.

- (1) UNIVERSAL JOINT IS MARKED w/ "BELDEN" LOGO, PART NUMBER / DRAWING NUMBER, REVISION LEVEL (IF ANY), DATE OF MANUFACTURE (MO/YR), AND BELDEN JOB NUMBER.
- (2) UNIVERSAL JOINT IS LUBRICATED w/ LUBRIPLATE 1200-2, NLGI GRADE 2, AW/EP, LITHIUM GREASE OR EQUIVALENT.
- (3) UNIVERSAL JOINT IS CAPABLE OF OPERATING AT ANY ANGLE UP TO AND INCLUDING 45°.
- (4) UNIVERSAL JOINT HAS STANDARD GROOVES TO ACCEPT INSTALLATION OF PROTECTIVE COVER (BOOT). BOOT AVAILABLE SEPARATELY. REFER TO BELDEN CATALOG, WEBSITE, OR CONTACT BELDEN SALES.
- (5) REFER TO BELDEN CATALOG, WEBSITE, OR CONTACT BELDEN SALES FOR TORQUE CAPACITY.
- (6) THIS DRAWING REPRESENTS A STANDARD BELDEN ITEM. CUSTOM UNIVERSAL JOINTS ARE AVAILABLE UPON REQUEST. PLEASE CONTACT BELDEN SALES.

BELDEN PART NUMBER: UJ-SS2000x00

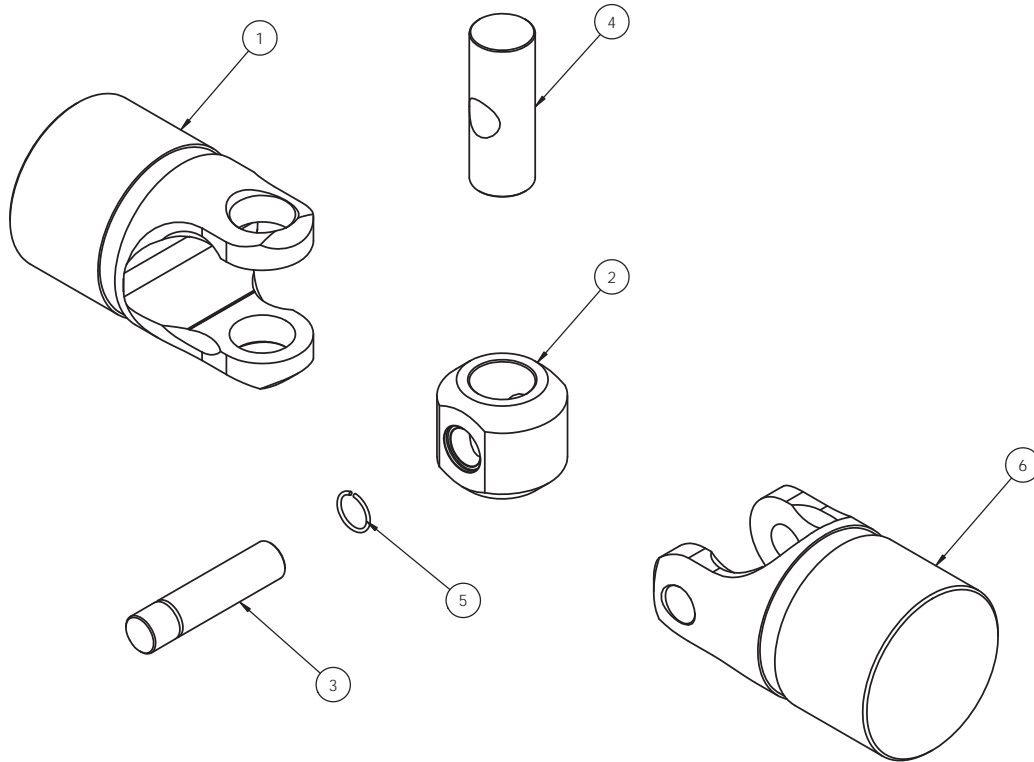
DO NOT SCALE DRAWING

| UNLESS OTHERWISE SPECIFIED CHAMFER ALL HOLES BREAK ALL SHARP CORNERS DE-BURR ALL FEATURES TURNED SURFACES: $\sqrt{63}$ MILLED SURFACES: $\sqrt{125}$ PROPRIETARY AND CONFIDENTIAL THE INFORMATION CONTAINED IN THIS DRAWING IS THE SOLE PROPERTY OF BELDEN INCORPORATED. ANY REPRODUCTION IN PART OR AS A WHOLE WITHOUT THE WRITTEN PERMISSION OF BELDEN INCORPORATED IS PROHIBITED. | STANDARD TOLERANCES, UNLESS OTHERWISE SPECIFIED DIMENSIONS ARE IN INCHES [mm] | MATERIAL: STAINLESS STEEL HEAT TREAT: SEE DETAIL DRAWINGS FINISH: NONE | <table border="1"> <tr> <th>NAME</th> <th>DATE</th> </tr> <tr> <td>RNK</td> <td>29JUN10</td> </tr> <tr> <th>CHECKED</th> <td>RNK 29JUN10</td> </tr> <tr> <th>ENG APPR.</th> <td>RNK 29JUN10</td> </tr> <tr> <th>MFG APPR.</th> <td> </td> </tr> <tr> <th>D/A</th> <td> </td> </tr> </table> | NAME | DATE | RNK | 29JUN10 | CHECKED | RNK 29JUN10 | ENG APPR. | RNK 29JUN10 | MFG APPR. | | D/A | | Belden Incorporated www.beldenuniversal.com TITLE: ASSEMBLY, UNIVERSAL JOINT |
|---|---|---|---|------|------|-----|---------|---------|-------------|-----------|-------------|-----------|--|-----|--|---|
| | NAME | DATE | | | | | | | | | | | | | | |
| | RNK | 29JUN10 | | | | | | | | | | | | | | |
| | CHECKED | RNK 29JUN10 | | | | | | | | | | | | | | |
| ENG APPR. | RNK 29JUN10 | | | | | | | | | | | | | | | |
| MFG APPR. | | | | | | | | | | | | | | | | |
| D/A | | | | | | | | | | | | | | | | |
| ANGULAR MACHINED: $\pm 1.0^\circ$ FRACTIONAL: ± 0.15 TWO PLACE DECIMAL: ± 0.10 THREE PLACE DECIMAL: ± 0.05 FOUR PLACE DECIMAL: ± 0.005 CONCENTRICITY: 0.005 T.I.R. | ALL HOLES TO BE LOCATED ON CENTERLINE (C) WITHIN .005" T.I.R. INTERPRET GEOMETRIC TOLERANCES I.A.W. ANSI Y14.5M-1992 | SIZE: C DWG. NO.: UJ-SS2000x00 SCALE: 1:1 WT (Lbs): 4.188 SHEET 1 OF 2 | REV: | | | | | | | | | | | | | |

| BOM Table | | | |
|-----------|--------------|---------------------------------|------|
| ITEM NO. | PART NUMBER | DESCRIPTION | QTY. |
| 1 | SSY2000LHx00 | YOKE, LARGE HOLE | 1 |
| 2 | SS2000-2A | BLOCK | 1 |
| 3 | SS2000-3A | SMALL PIN | 1 |
| 4 | SS2000-5A | LARGE PIN | 1 |
| 5 | SS2000-6A | RETAINING RING, STAINLESS STEEL | 1 |
| 6 | SSY2000SHx00 | YOKE, SMALL HOLE | 1 |

| REVISIONS | | | | |
|-----------|------|-------------|------|----------|
| ZONE | REV. | DESCRIPTION | DATE | APPROVED |
| - | - | See Sheet1 | - | - |

INFORMATION IN THIS DRAWING PROVIDED FOR REFERENCE ONLY



DO NOT SCALE DRAWING

| UNLESS OTHERWISE SPECIFIED CHAMFER ALL HOLES BREAK ALL SHARP CORNERS DE-BURR ALL FEATURES TURNED SURFACES: $\sqrt{6.3}$ MILLED SURFACES: $\sqrt{125}$ PROPRIETARY AND CONFIDENTIAL THE INFORMATION CONTAINED IN THIS DRAWING IS THE SOLE PROPERTY OF BELDEN INCORPORATED. ANY REPRODUCTION IN PART OR AS A WHOLE WITHOUT THE WRITTEN PERMISSION OF BELDEN INCORPORATED IS PROHIBITED. | STANDARD TOLERANCES, UNLESS OTHERWISE SPECIFIED DIMENSIONS ARE IN INCHES (mm) | MATERIAL: STAINLESS STEEL HEAT TREAT: SEE DETAIL DRAWINGS FINISH: NONE | <table border="1"> <tr> <th>NAME</th> <th>DATE</th> </tr> <tr> <td>RNK</td> <td>29JUN10</td> </tr> <tr> <th>CHECKED</th> <th>DATE</th> </tr> <tr> <td>RNK</td> <td>29JUN10</td> </tr> <tr> <th>ENG APPR.</th> <th>DATE</th> </tr> <tr> <td>RNK</td> <td>29JUN10</td> </tr> <tr> <th>MFG APPR.</th> <th>DATE</th> </tr> <tr> <td></td> <td></td> </tr> <tr> <th>DATE</th> <th></th> </tr> <tr> <td></td> <td></td> </tr> </table> | NAME | DATE | RNK | 29JUN10 | CHECKED | DATE | RNK | 29JUN10 | ENG APPR. | DATE | RNK | 29JUN10 | MFG APPR. | DATE | | | DATE | | | | Belden Incorporated www.beldenuniversal.com TITLE: ASSEMBLY, UNIVERSAL JOINT |
|--|--|--|--|------|------|-----|---------|---------|------|-----|---------|-----------|------|-----|---------|-----------|------|--|--|------|--|--|--|---|
| | NAME | DATE | | | | | | | | | | | | | | | | | | | | | | |
| | RNK | 29JUN10 | | | | | | | | | | | | | | | | | | | | | | |
| | CHECKED | DATE | | | | | | | | | | | | | | | | | | | | | | |
| RNK | 29JUN10 | | | | | | | | | | | | | | | | | | | | | | | |
| ENG APPR. | DATE | | | | | | | | | | | | | | | | | | | | | | | |
| RNK | 29JUN10 | | | | | | | | | | | | | | | | | | | | | | | |
| MFG APPR. | DATE | | | | | | | | | | | | | | | | | | | | | | | |
| | | | | | | | | | | | | | | | | | | | | | | | | |
| DATE | | | | | | | | | | | | | | | | | | | | | | | | |
| | | | | | | | | | | | | | | | | | | | | | | | | |
| ALL HOLES TO BE LOCATED ON CENTERLINE (C) WITHIN .005" T.I.R. INTERPRET GEOMETRIC TOLERANCES I.A.W. ANSI Y14.5M-1992 | SIZE: C DWG. NO.: UJ-SS2000x00 SCALE: 1:1 WT (Lbs): 4.188 | REV: | SHEET 2 OF 2 | | | | | | | | | | | | | | | | | | | | | |