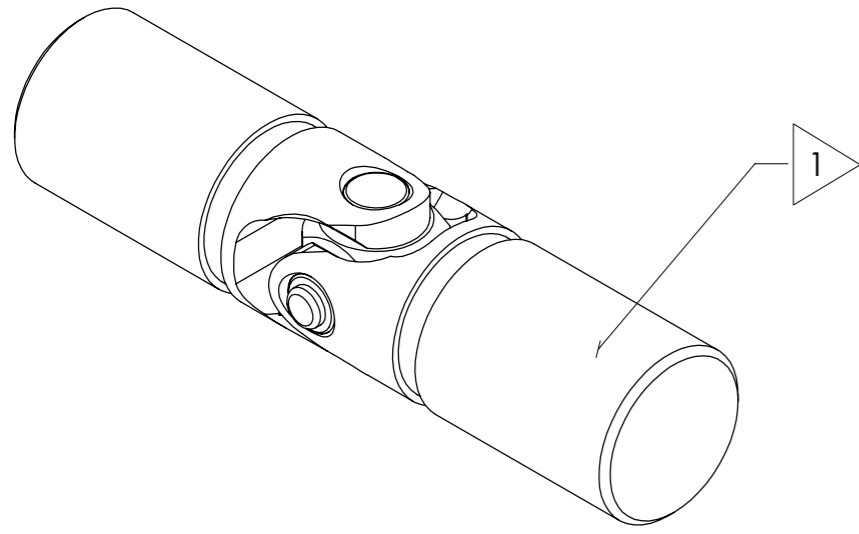


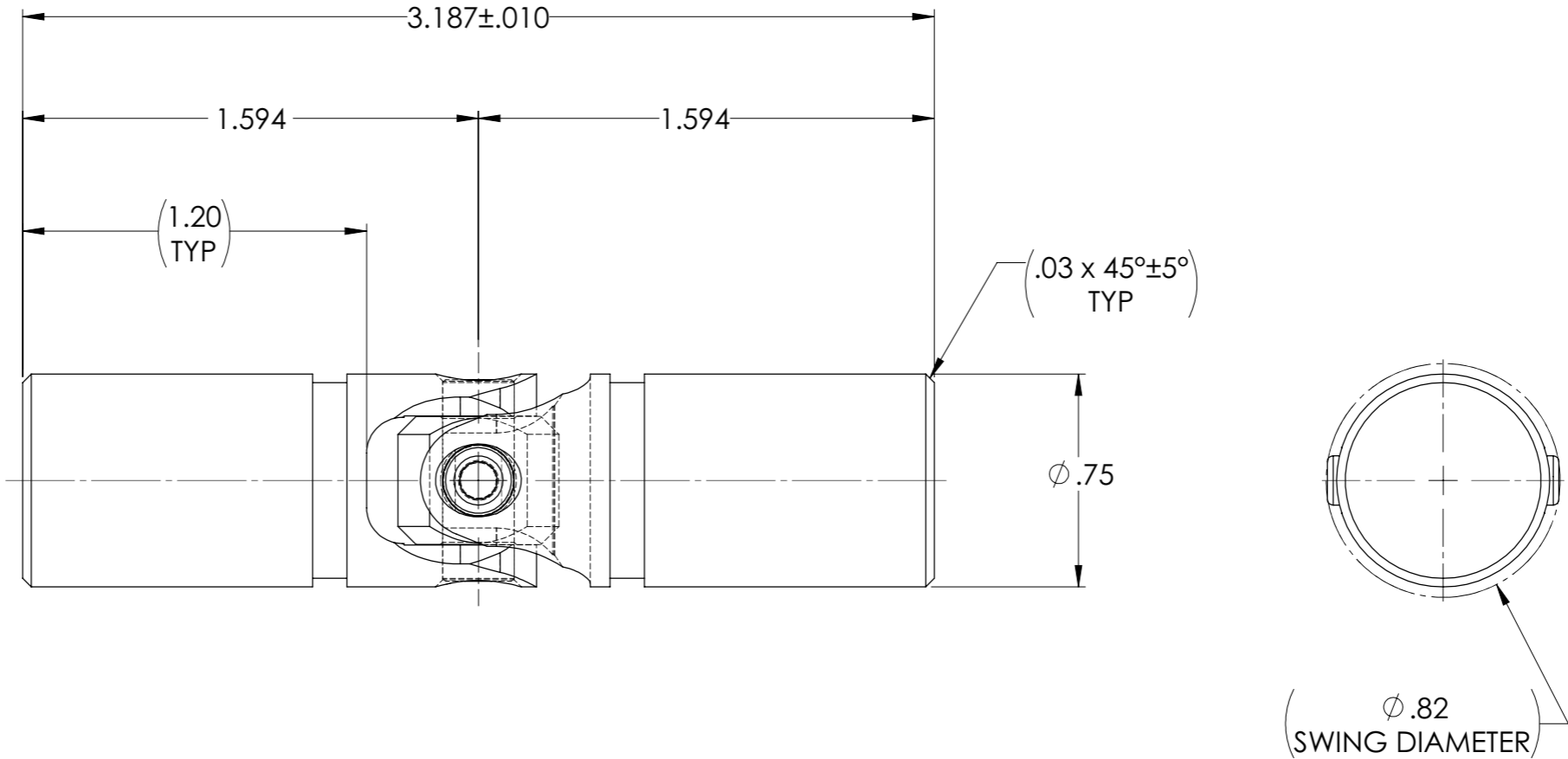
# APPROVED

REVISIONS				
ZONE	REV.	DESCRIPTION	DATE	APPROVED

INFORMATION IN THIS DRAWING  
PROVIDED FOR REFERENCE ONLY



SCALE 2 : 1



NOTE(S), UNLESS OTHERWISE SPECIFIED.

1 MARK ASSEMBLY w/ "BELDEN" LOGO, PART NUMBER, REVISION LEVEL (IF ANY), DATE OF MANUFACTURE & BELDEN JOB NUMBER.

(2) LUBRICATE UNIVERSAL JOINT w/ LUBRIPLATE No. 3000, NLGI GRADE 2, AW/EP MOLY-LITHIUM GREASE.

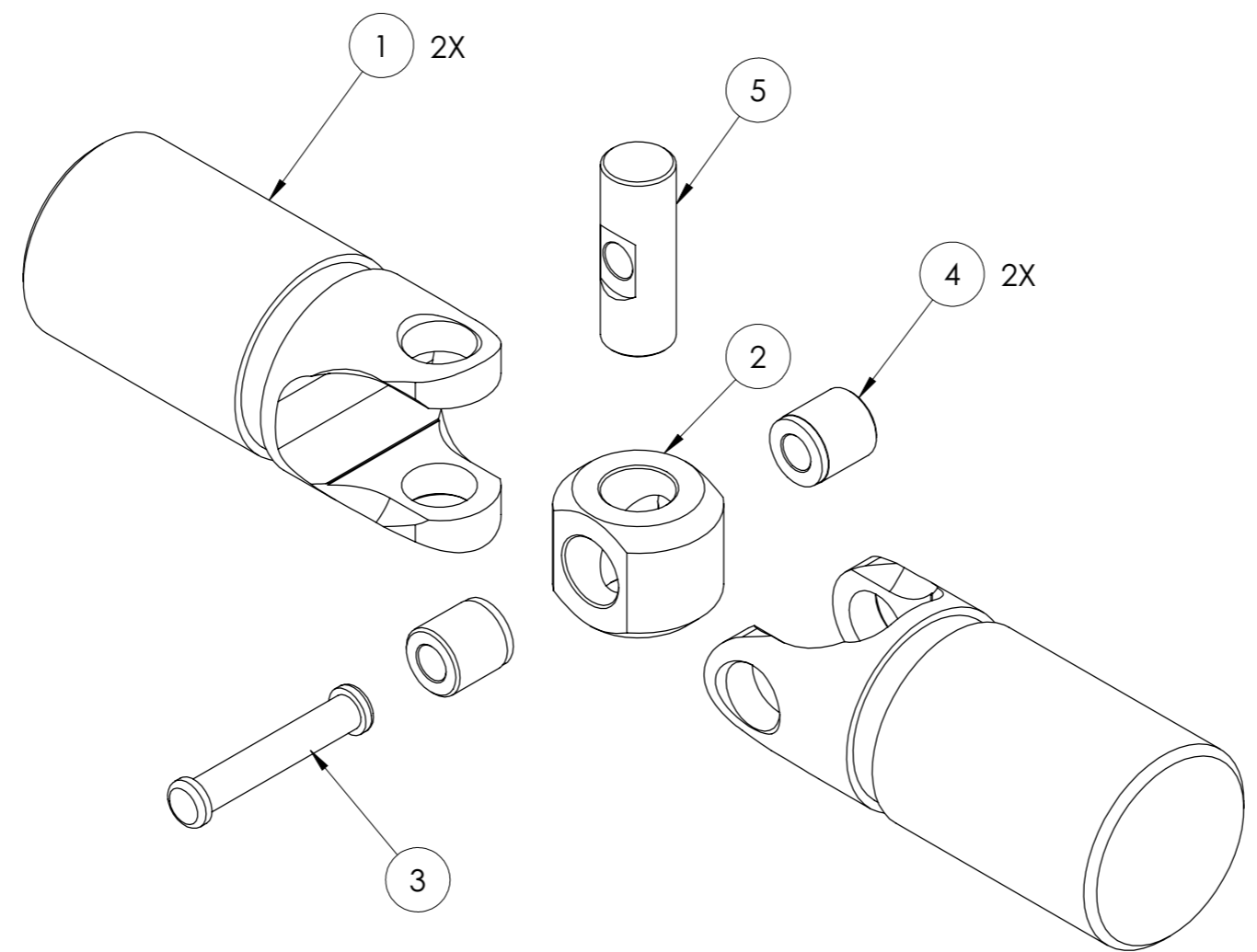
(A) (3) RIVET I.A.W. BEL-ES-0005.

DO NOT SCALE DRAWING

UNLESS OTHERWISE SPECIFIED CHAMFER ALL HOLES BREAK ALL SHARP CORNERS DE-BURR ALL FEATURES TURNED SURFACES: $\checkmark$ 63/ MILLED SURFACES: $\checkmark$ 125/ PROPRIETARY AND CONFIDENTIAL THE INFORMATION CONTAINED IN THIS DRAWING IS THE SOLE PROPERTY OF BELDEN UNIVERSAL. ANY REPRODUCTION IN PART OR AS A WHOLE WITHOUT THE WRITTEN PERMISSION OF BELDEN UNIVERSAL IS PROHIBITED.	STANDARD TOLERANCES, UNLESS OTHERWISE SPECIFIED DIMENSIONS ARE IN INCHES [mm]	MATERIAL ALLOY STEEL	INITIALS DRAWN JP CHECKED RNK ENG APPR. RNK MFG APPR. QC APPR.	DATE 26FEB14 26FEB14 26FEB14	Belden Universal <a href="http://www.beldenuniversal.com">www.beldenuniversal.com</a>
	ANGULAR MACHINED: $\pm 1.0^\circ$ FRACTIONAL: $\pm .015$ " TWO PLACE DECIMAL: $\pm .010$ " THREE PLACE DECIMAL: $\pm .005$ " FOUR PLACE DECIMAL: $\pm .0005$ " CONCENTRICITY: $.0025$ " T.I.R.	HEAT TREAT SEE DETAIL DRAWINGS	FINISH NONE	COMMENTS:	TITLE: ASSEMBLY, UNIVERSAL JOINT
	ALL HOLES TO BE LOCATED ON CENTERLINE (☺) WITHIN .005" T.I.R. INTERPRET GEOMETRIC TOLERANCES I.A.W. ASME Y14.5	SIZE A	DWG. NO. UJ-LV750x00	REV A	SCALE: 2.5:1   WT (Lbs): 0.349   SHEET 1 OF 2

# APPROVED

REVISIONS				
ZONE	REV.	DESCRIPTION	DATE	APPROVED
-	-	See Sheet1	-	-



5	HS750-5B	(A)	LONG PIN	1
4	HS750-4B	(A)	SHORT PIN	2
3	MS20271B12-3A	(A)	RIVET	1
2	HS750-2A		BLOCK	1
1	LVY750		YOKE	2
ITEM NO.	PART NUMBER		DESCRIPTION	QTY.
BOM Table				

**ISSUED**  
By Jerzy Pawelec  
Jan 23, 2020

DO NOT SCALE DRAWING

UNLESS OTHERWISE SPECIFIED CHAMFER ALL HOLES BREAK ALL SHARP CORNERS DE-BURR ALL FEATURES TURNED SURFACES: $\sqrt{63}$ MILLED SURFACES: $\sqrt{125}$	STANDARD TOLERANCES, UNLESS OTHERWISE SPECIFIED DIMENSIONS ARE IN INCHES [mm] ANGULAR MACHINED: $\pm 1.0^\circ$ FRACTIONAL: $\pm .015"$ TWO PLACE DECIMAL: $\pm .010"$ THREE PLACE DECIMAL: $\pm .005"$ FOUR PLACE DECIMAL: $\pm .0005"$ CONCENTRICITY: $.0025"$ T.I.R.	MATERIAL ALLOY STEEL HEAT TREAT SEE DETAIL DRAWINGS FINISH NONE	INITIALS DATE DRAWN JP 26FEB14 CHECKED RNK 26FEB14 ENG APPR. RNK 26FEB14 MFG APPR. QC APPR.	Belden Universal <a href="http://www.beldenuniversal.com">www.beldenuniversal.com</a> TITLE: <b>ASSEMBLY,            UNIVERSAL JOINT</b> SIZE <b>A</b> DWG. NO. UJ-LV750x00 REV <b>A</b> SCALE: 2.5:1 WT (Lbs): 0.349 SHEET 2 OF 2
PROPRIETARY AND CONFIDENTIAL THE INFORMATION CONTAINED IN THIS DRAWING IS THE SOLE PROPERTY OF BELDEN UNIVERSAL. ANY REPRODUCTION IN PART OR AS A WHOLE WITHOUT THE WRITTEN PERMISSION OF BELDEN UNIVERSAL IS PROHIBITED.		ALL HOLES TO BE LOCATED ON CENTERLINE (C ) WITHIN .005" T.I.R. INTERPRET GEOMETRIC TOLERANCES I.A.W. ASME Y14.5		COMMENTS: