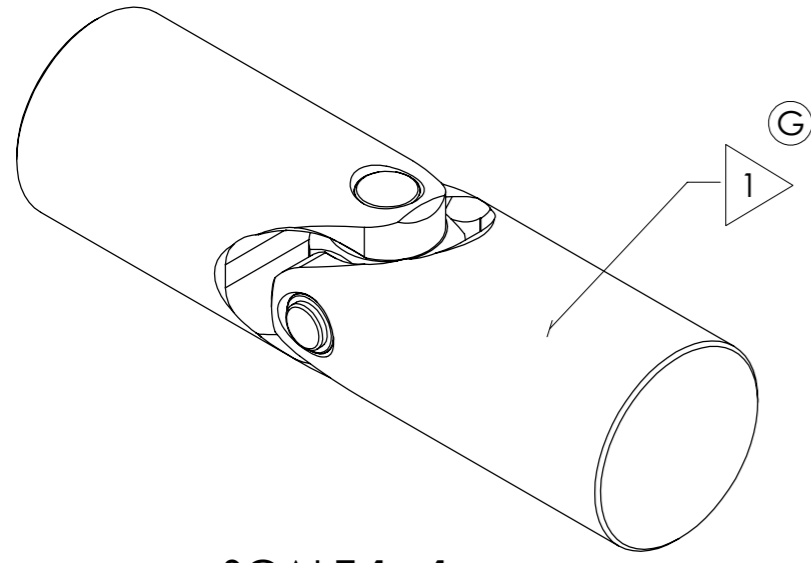


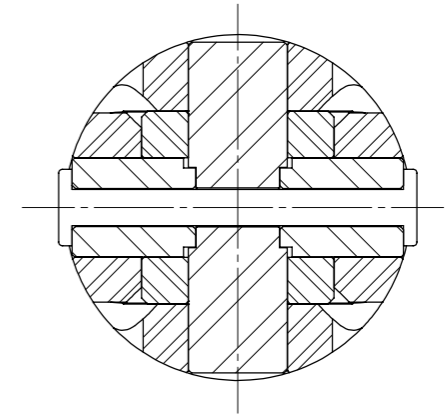
APPROVED

REVISIONS				
ZONE	REV.	DESCRIPTION	DATE	APPROVED

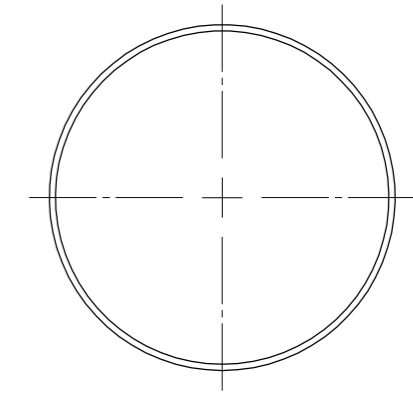
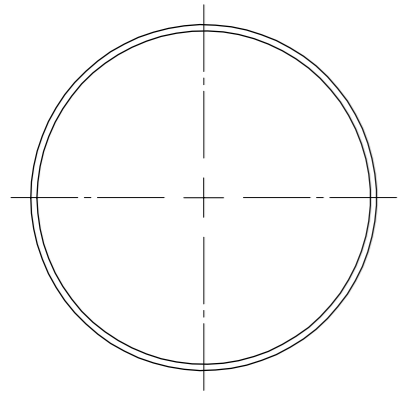
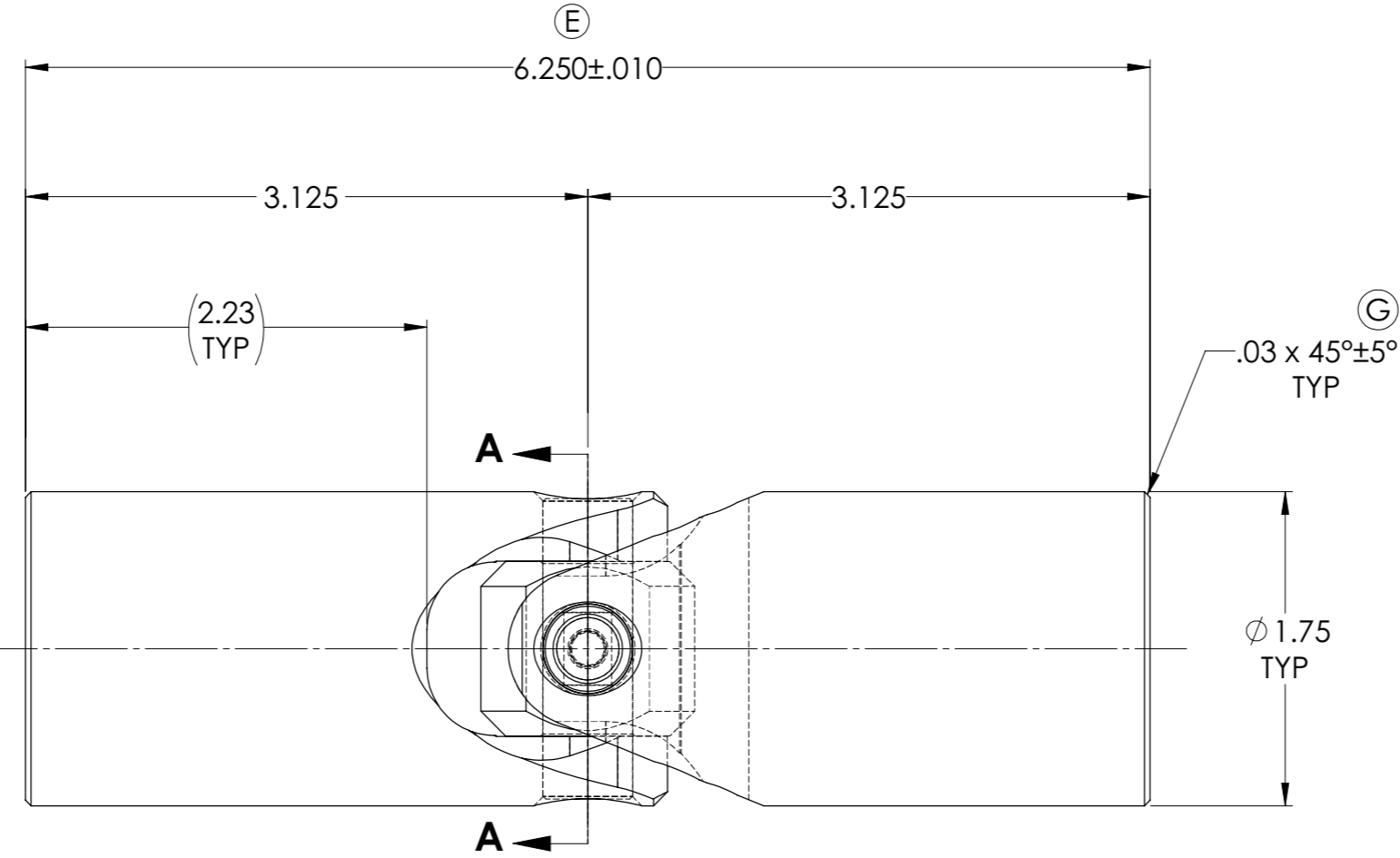
INFORMATION IN THIS DRAWING
PROVIDED FOR REFERENCE ONLY



SCALE 1 : 1



SECTION A-A



NOTE(s), UNLESS OTHERWISE SPECIFIED.

- ① MARK ASSEMBLY w/ "BELDEN" LOGO, PART NUMBER, REVISION LEVEL (IF ANY), DATE OF MANUFACTURE, & BELDEN JOB No.
- ② LUBRICATE w/ LUBRIPLATE PRODUCT No. 3000 MOLY-LITHIUM, AW/EP, NLGI GRADE 2 GREASE or EQUIVALENT.
- ③ RIVET I.A.W. BEL-ES-0005.

DO NOT SCALE DRAWING

<small>UNLESS OTHERWISE SPECIFIED CHAMFER ALL HOLES BREAK ALL SHARP CORNERS DE-BURR ALL FEATURES</small> TURNED SURFACES: $\sqrt{63}$ MILLED SURFACES: $\sqrt{125}$ PROPRIETARY AND CONFIDENTIAL <small>THE INFORMATION CONTAINED IN THIS DRAWING IS THE SOLE PROPERTY OF BELDEN UNIVERSAL. ANY REPRODUCTION IN PART OR AS A WHOLE WITHOUT THE WRITTEN PERMISSION OF BELDEN UNIVERSAL IS PROHIBITED.</small>	<small>STANDARD TOLERANCES, UNLESS OTHERWISE SPECIFIED</small> DIMENSIONS ARE IN INCHES [mm] ANGULAR MACHINED: $\pm 1.0^\circ$ FRACTIONAL: $\pm .015"$ TWO PLACE DECIMAL: $\pm .010"$ THREE PLACE DECIMAL: $\pm .005"$ FOUR PLACE DECIMAL: $\pm .0005"$ CONCENTRICITY: $.0025"$ T.I.R. ALL HOLES TO BE LOCATED ON CENTERLINE (☉) WITHIN $.005"$ T.I.R. INTERPRET GEOMETRIC TOLERANCES I.A.W. ASME Y14.5	MATERIAL ALLOY STEEL HEAT TREAT SEE DETAIL DRAWINGS FINISH NONE	DRAWN LPS(RNK) 06 JAN 94 CHECKED RNK 09/23/2019 ENG APPR. RNK 09/23/2019 MFG APPR. QC APPR.	INITIALS RNK RNK	DATE 06 JAN 94 09/23/2019 09/23/2019	Belden Universal www.beldenuniversal.com TITLE: ASSEMBLY, UNIVERSAL JOINT SIZE A DWG. NO. UJ-LV1750 REV G SCALE: 1.5:1 WT (Lbs): 3.759 SHEET 1 OF 2
			COMMENTS:			
			COMMENTS:			
			COMMENTS:			