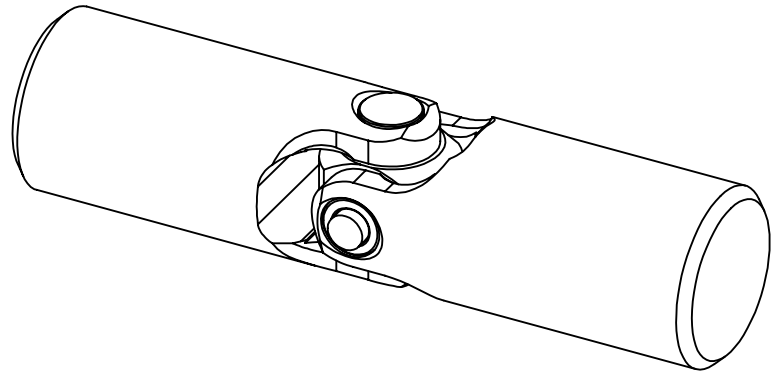
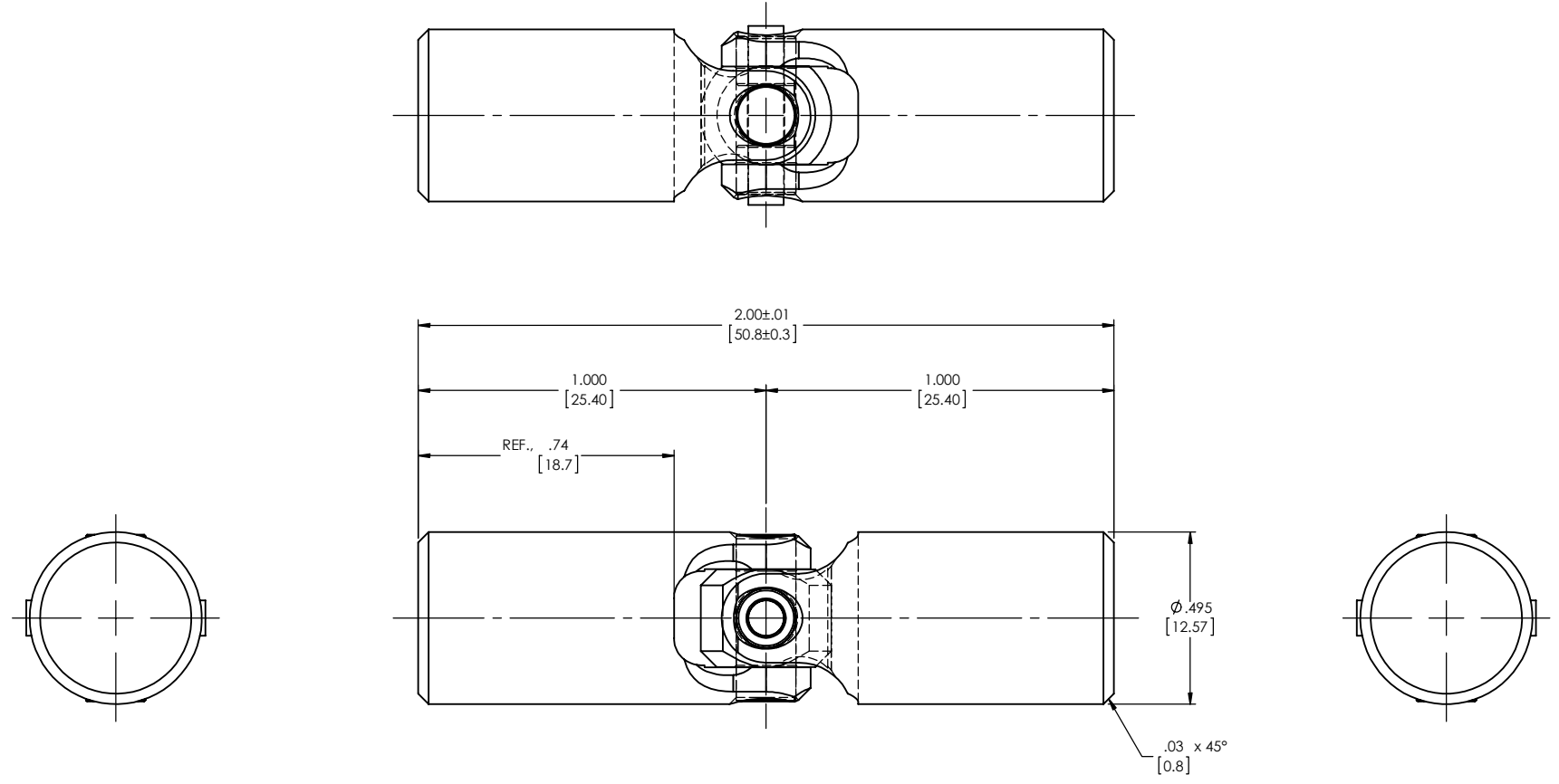


REVISIONS				
ZONE	REV.	DESCRIPTION	DATE	APPROVED

INFORMATION IN THIS DRAWING  
PROVIDED FOR REFERENCE ONLY



NOTE(s), UNLESS OTHERWISE SPECIFIED.

(1) MARK (ELECTRO-ETCH) ASSEMBLY w/ "BELDEN" NAME, PART NUMBER, REVISION LEVEL (IF ANY), DATE OF MANUFACTURE (MO/YR), AND BELDEN JOB NUMBER.

(2) REF., MAXIMUM ANGLE OF OPERATION: 45°.

DO NOT SCALE DRAWING

UNLESS OTHERWISE SPECIFIED CHAMFER ALL HOLES BREAK ALL SHARP CORNERS DE-BURR ALL FEATURES  TURNED SURFACES: $\sqrt{63}$ MILLED SURFACES: $\sqrt{125}$  <b>PROPRIETARY AND CONFIDENTIAL</b> THE INFORMATION CONTAINED IN THIS DRAWING IS THE SOLE PROPERTY OF BELDEN INCORPORATED. ANY REPRODUCTION IN PART OR AS A WHOLE WITHOUT THE WRITTEN PERMISSION OF BELDEN INCORPORATED IS PROHIBITED.	STANDARD TOLERANCES, UNLESS OTHERWISE SPECIFIED  DIMENSIONS ARE IN INCHES [mm]	MATERIAL ALLOY STEEL  HEAT TREAT	NAME RNK 16JAN01  CHECKED RNK 16JAN01  ENG APPR. RNK 16JAN01  MFG APPR.  Q.A.  COMMENTS:	<b>BELDEN INCORPORATED</b> <a href="http://www.beldenuniversal.com">www.beldenuniversal.com</a>  TITLE: <b>ASSEMBLY, HIGH          STRENGTH UNIVERSAL          JOINT</b>	
	ANGULAR MACHINED: $\pm 1.0^\circ$ FRACTIONAL: $\pm .015$ TWO PLACE DECIMAL: $\pm .010$ THREE PLACE DECIMAL: $\pm .005$ FOUR PLACE DECIMAL: $\pm .0005$ CONCENTRICITY: $\pm .0025$ T.I.R.	NONE	SIZE <b>C</b>	DWG. NO. <b>UJ-HS500</b>	REV <b>A</b>
	ALL HOLES TO BE LOCATED ON CENTERLINE (Q) WITHIN .005" T.I.R. INTERPRET GEOMETRIC TOLERANCES I.A.W. ANSI Y14.5M-1992	SCALE: 4:1   WT (Lbs): 0.096   SHEET 1 OF 2	DATE 1/21/2011 10:56 AM	DATE 1/21/2011 10:56 AM	DATE 1/21/2011 10:56 AM
	FORM 157-C 6-10	UJ-HS500.SLDDRW	3	2	1