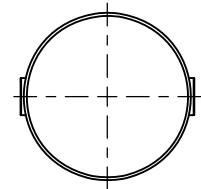
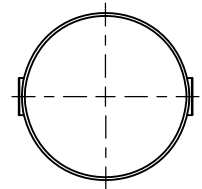
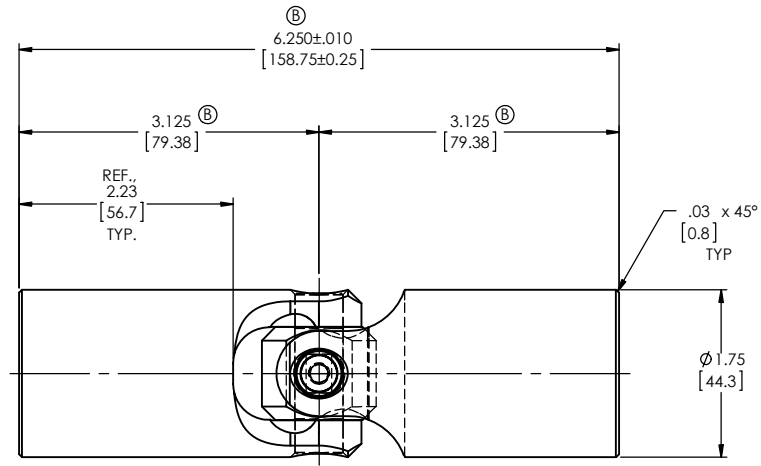
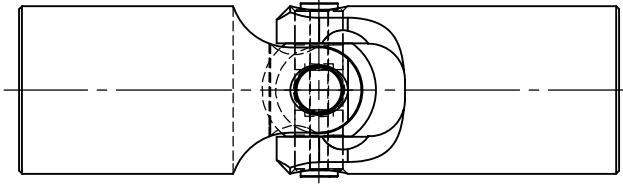
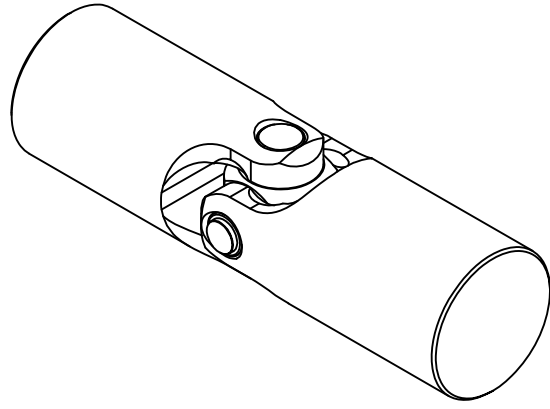


REVISIONS				
ZONE	REV.	DESCRIPTION	DATE	APPROVED

INFORMATION IN THIS DRAWING
PROVIDED FOR REFERENCE ONLY



NOTE(S), UNLESS OTHERWISE SPECIFIED.

(1) MARK ASSEMBLY w/ "BELDEN" LOGO, PART NUMBER (DRAWING NUMBER), REVISION LEVEL (IF ANY), DATE OF MANUFACTURE, & BELDEN JOB NUMBER.

(2) REFERENCE, MAXIMUM ANGLE OF OPERATION: 45°.

DO NOT SCALE DRAWING

UNLESS OTHERWISE SPECIFIED CHAMFER ALL HOLES BREAK ALL SHARP CORNERS DE-BURR ALL FEATURES TURNED SURFACES: $\frac{43}{125}$ MILLED SURFACES: $\frac{125}{125}$ PROPRIETARY AND CONFIDENTIAL THE INFORMATION CONTAINED IN THIS DRAWING IS THE SOLE PROPERTY OF BELDEN INCORPORATED. ANY REPRODUCTION IN PART OR AS A WHOLE WITHOUT THE WRITTEN PERMISSION OF BELDEN INCORPORATED IS PROHIBITED.	STANDARD TOLERANCES, UNLESS OTHERWISE SPECIFIED DIMENSIONS ARE IN INCHES [mm]	MATERIAL ALLOY STEEL	NAME RNK	DATE 11NOV98	Belden Incorporated www.beldenuniversal.com TITLE: ASSEMBLY, HIGH STRENGTH UNIVERSAL JOINT
	ANGULAR MACHINED: $\pm 1.0^\circ$ FRACTIONAL: ± 0.015 TWO PLACE DECIMAL: ± 0.010 THREE PLACE DECIMAL: ± 0.005 FOUR PLACE DECIMAL: ± 0.0005 CONCENTRICITY: $.0025$ T.I.R.	HEAT TREAT	CHECKED RNK	DATE 11NOV98	
	ALL HOLES TO BE LOCATED ON CENTERLINE (C) WITHIN .005" T.I.R. INTERPRET GEOMETRIC TOLERANCES I.A.W. ANSI Y14.5M-1992	FINISH NONE	ENG APPR. RNK	MFG APPR.	
	COMMENTS:	G.A.	DATE	DATE	
SIZE C	DWG. NO. UJ-HS1750	REV F	SCALE: 1:1	WT (Lbs): 3.715	SHEET 1 OF 2