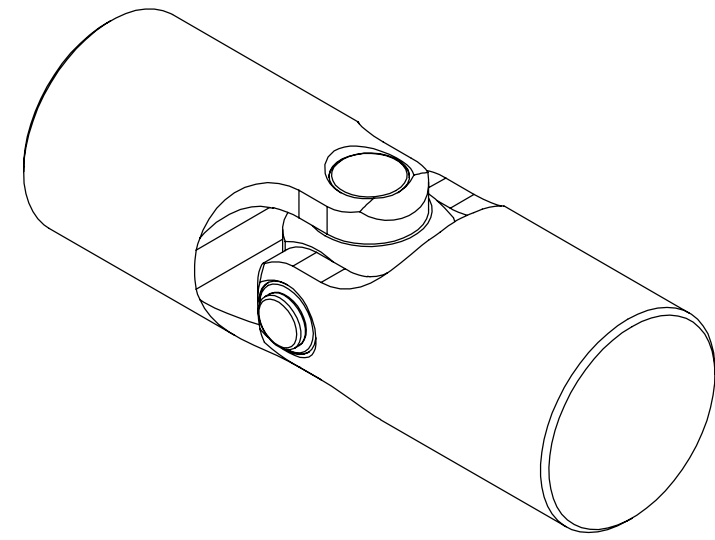
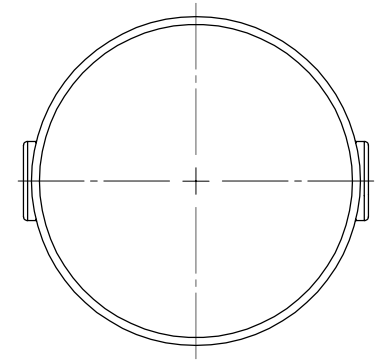
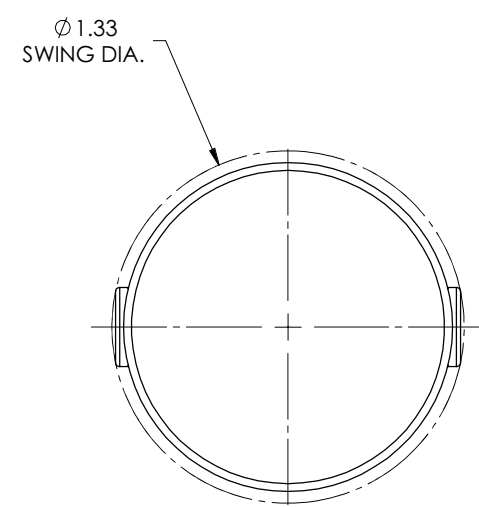
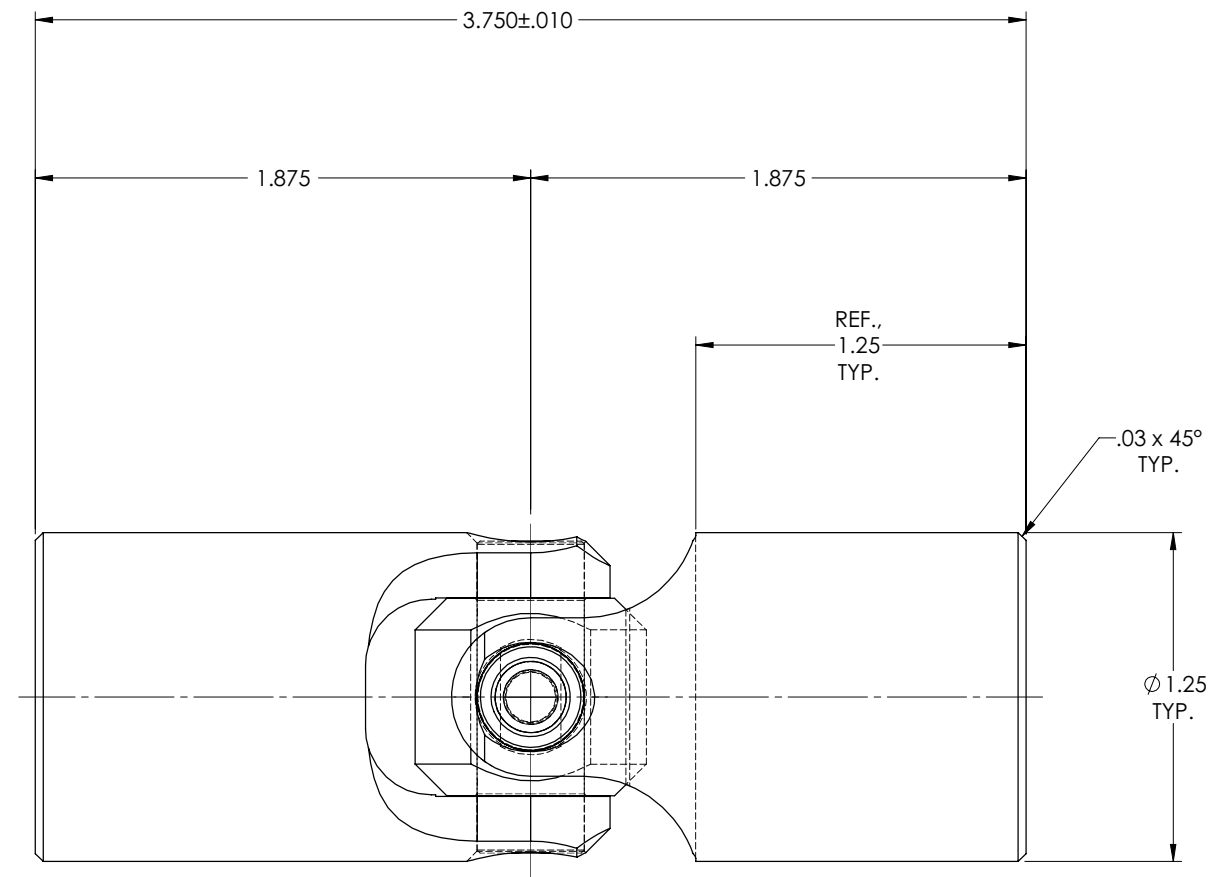


REVISIONS				
ZONE	REV.	DESCRIPTION	DATE	APPROVED

INFORMATION IN THIS DRAWING
PROVIDED FOR REFERENCE ONLY



SCALE 1.5 : 1



NOTE(s), UNLESS OTHERWISE SPECIFIED.
(1) MARK ASSEMBLY W/ "BELDEN" LOGO, PART NUMBER, REVISION LEVEL (IF ANY), DATE OF MANUFACTURE, & BELDEN JOB No.

DO NOT SCALE DRAWING

UNLESS OTHERWISE SPECIFIED CHAMFER ALL HOLES BREAK ALL SHARP CORNERS DE-BURR ALL FEATURES TURNED SURFACES: $\sqrt{63}$ MILLED SURFACES: $\sqrt{125}$ PROPRIETARY AND CONFIDENTIAL THE INFORMATION CONTAINED IN THIS DRAWING IS THE SOLE PROPERTY OF BELDEN INCORPORATED. ANY REPRODUCTION IN PART OR AS A WHOLE WITHOUT THE WRITTEN PERMISSION OF BELDEN INCORPORATED IS PROHIBITED.	STANDARD TOLERANCES, UNLESS OTHERWISE SPECIFIED DIMENSIONS ARE IN INCHES [mm]	MATERIAL ALLOY STEEL	NAME RNK	DATE 17DEC04	Belden Incorporated www.beldenuniversal.com TITLE: ASSEMBLY, UNIVERSAL JOINT
	ANGULAR MACHINED: $\pm 1.0^\circ$ FRACTIONAL: $\pm .015"$ TWO PLACE DECIMAL: $\pm .010"$ THREE PLACE DECIMAL: $\pm .005"$ FOUR PLACE DECIMAL: $\pm .0005"$ CONCENTRICITY: $.0025"$ T.I.R.	HEAT TREAT SEE DETAIL DRAWINGS	DRAWN RNK	17DEC04	
	ALL HOLES TO BE LOCATED ON CENTERLINE (ϕ) WITHIN $.005"$ T.I.R. INTERPRET GEOMETRIC TOLERANCES I.A.W. ANSI Y14.5M-1982	FINISH NONE	CHECKED RNK	17DEC04	
	COMMENTS:	MFG APPR. Q.A.	ENG APPR. RNK	17DEC04	
SIZE C	DWG. NO. UJ-HS1250	REV B	SCALE: 2:1	WT (Lbs): 1.103	SHEET 1 OF 2