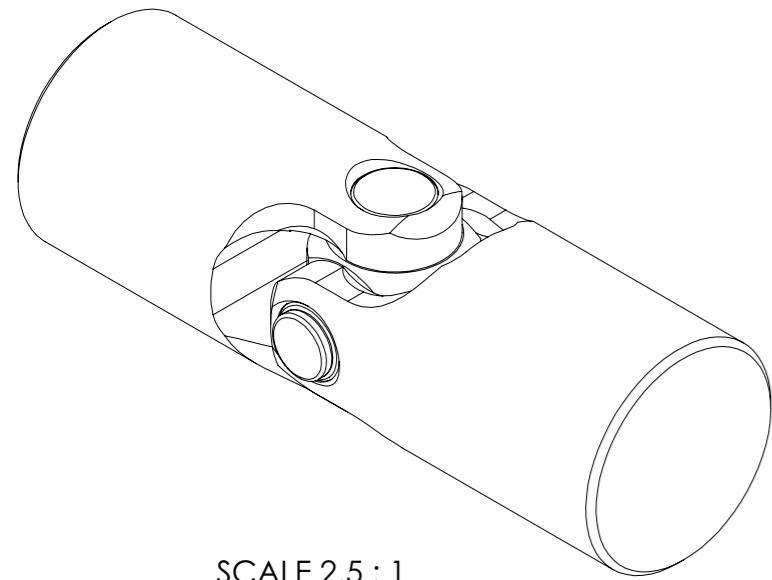


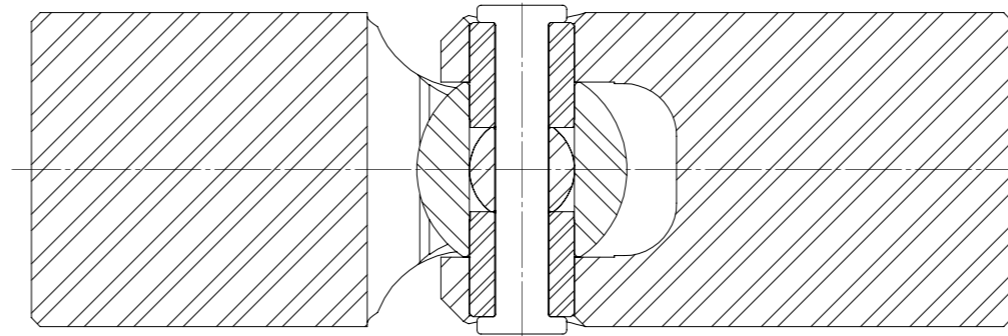
APPROVED

REVISIONS				
ZONE	REV.	DESCRIPTION	DATE	APPROVED

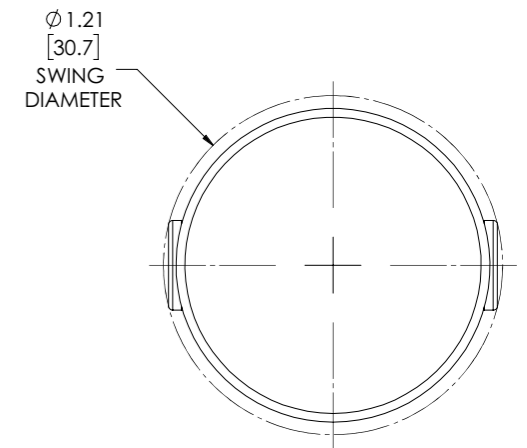
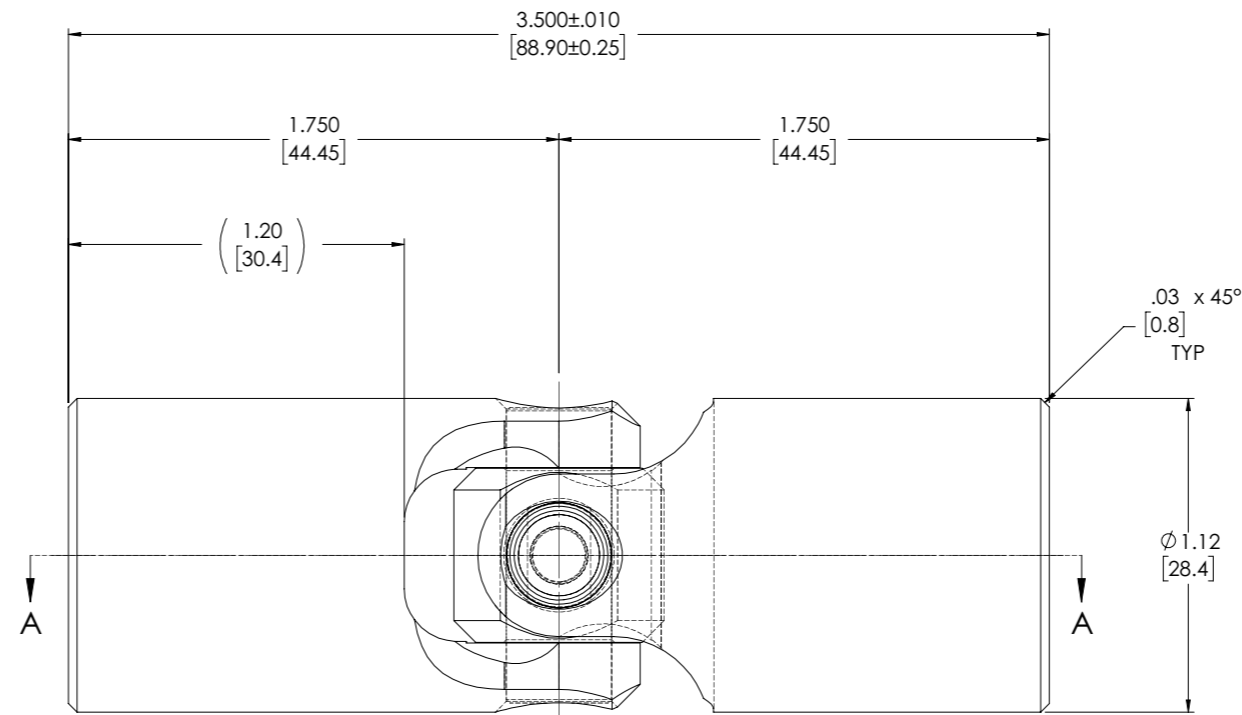
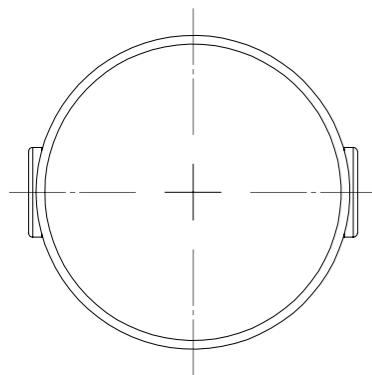
INFORMATION IN THIS DRAWING
PROVIDED FOR REFERENCE ONLY



SCALE 2.5 : 1



SECTION A-A



NOTE(s), UNLESS OTHERWISE SPECIFIED.

(1) MARK ASSEMBLY w/ "BELDEN" LOGO, PART NUMBER, REVISION LEVEL (IF ANY), DATE OF MANUFACTURE, & BELDEN JOB NUMBER.

(2) LUBRICATE w/ LUBRIPLATE No. 1200-2, NLGI GRADE 2, AW/EP, MOLY-LITHIUM GREASE OR EQUIVALENT.

DO NOT SCALE DRAWING

UNLESS OTHERWISE SPECIFIED CHAMFER ALL HOLES BREAK ALL SHARP CORNERS DE-BURR ALL FEATURES TURNED SURFACES: $\sqrt{63}$ MILLED SURFACES: $\sqrt{125}$	STANDARD TOLERANCES, UNLESS OTHERWISE SPECIFIED DIMENSIONS ARE IN INCHES [mm]	MATERIAL: ALLOY STEEL	INITIALS DRAWN: RNK CHECKED: RNK	DATE 08JAN04 08JAN04	BELDEN UNIVERSAL www.beldenuniversal.com ASSEMBLY, UNIVERSAL JOINT, HIGH STRENGTH
	ANGULAR MACHINED: $\pm 1.0^\circ$ FRACTIONAL: $\pm .015"$ TWO PLACE DECIMAL: $\pm .010"$ THREE PLACE DECIMAL: $\pm .005"$ FOUR PLACE DECIMAL: $\pm .0005"$ CONCENTRICITY: $.0025"$ T.I.R.	HEAT TREAT: SEE DETAIL DRAWINGS	ENG APPR: EO MFG APPR:	03/13/2017	
	PROPRIETARY AND CONFIDENTIAL THE INFORMATION CONTAINED IN THIS DRAWING IS THE SOLE PROPERTY OF BELDEN INCORPORATED. ANY REPRODUCTION IN PART OR AS A WHOLE WITHOUT THE WRITTEN PERMISSION OF BELDEN INCORPORATED IS PROHIBITED.	ALL HOLES TO BE LOCATED ON CENTERLINE (C) WITHIN .005" T.I.R. INTERPRET GEOMETRIC TOLERANCES I.A.W. ASME Y14.5	FINISH/COATING: NONE	COMMENTS:	
	SIZE DWG. NO. B UJ-HS1125 REV B			SCALE: 3:1 WEIGHT (Lbs): 0.847 SHEET 1 OF 2	