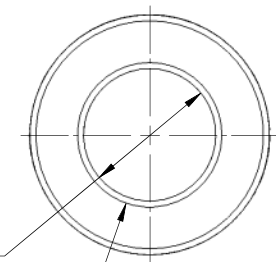
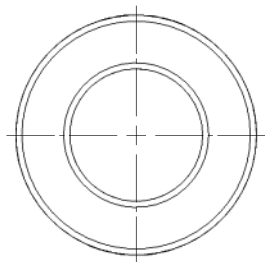
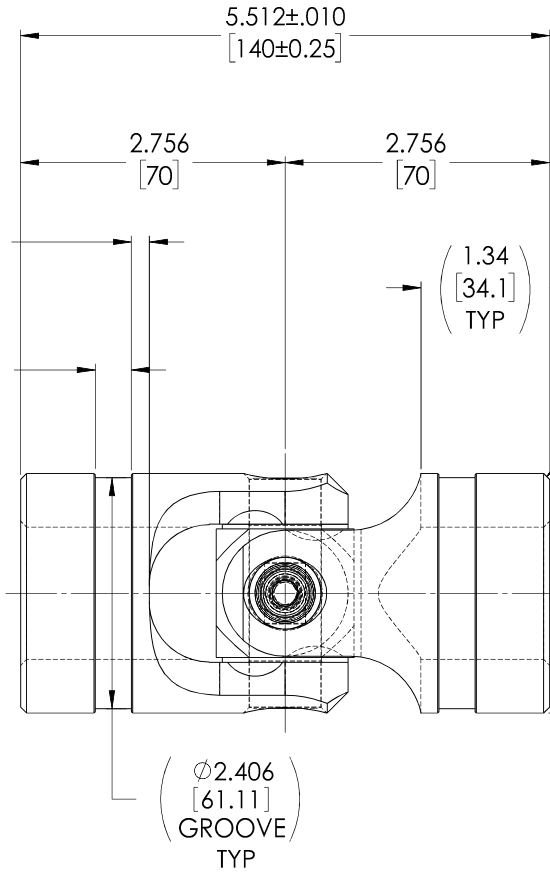
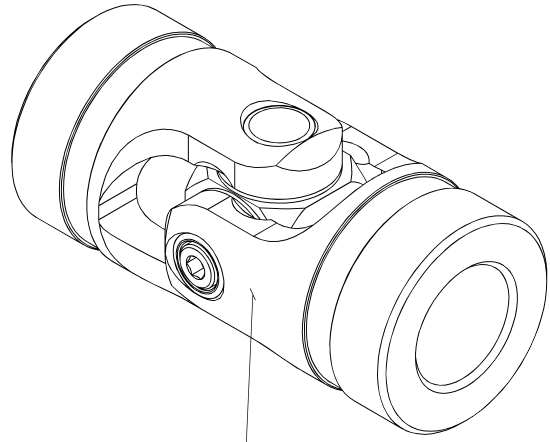


# APPROVED

REVISIONS			
ZONE	REV.	DESCRIPTION	DATE

INFORMATION IN THIS DRAWING  
PROVIDED FOR REFERENCE ONLY



$\phi 1.3780^{+0.0010}$   
 $^{-0.0000}$   
 $[35^{+0.025}]$   
 $0$

$\checkmark \phi 1.50 \times 90^\circ \pm 10^\circ$  INCL.  
 $[38.2]$

TYPICAL BOTH ENDS

NOTE(s), UNLESS OTHERWISE SPECIFIED.

- 1 MARK ASSEMBLY w/ "BELDEN" LOGO, PART NUMBER, REVISION LEVEL (IF ANY), DATE OF MANUFACTURE, & BELDEN JOB NUMBER.
- (2) LUBRICATE w/ LUBRIPLATE PRODUCT No. 1200-2, NLGI GRADE 2, AW/EP, LITHIUM GREASE OR EQUIVALENT.
- (3) TORQUE M8x1.25 SOCKET HEAD CAP SCREW TO 20 FT-LBS.
- (4) REF., MAXIMUM OPERATION ANGLE: 45°.

DO NOT SCALE DRAWING

UNLESS OTHERWISE SPECIFIED CHAMFER ALL HOLES BREAK ALL SHARP CORNERS DE-BURR ALL FEATURES TURNED SURFACES: $\checkmark$ 63 MILLED SURFACES: $\checkmark$ 125 PROPRIETARY AND CONFIDENTIAL THE INFORMATION CONTAINED IN THIS DRAWING IS THE SOLE PROPERTY OF BELDEN UNIVERSAL. ANY REPRODUCTION IN PART OR AS A WHOLE WITHOUT THE WRITTEN PERMISSION OF BELDEN UNIVERSAL IS PROHIBITED.	STANDARD TOLERANCES UNLESS OTHERWISE SPECIFIED	MATERIAL ALLOY STEEL	INITIALS JPM	DATE 20AUG20	Belden Universal www.beldenuniversal.com TITLE: <b>ASSEMBLY, UNIVERSAL JOINT</b>	
	DIMENSIONS ARE IN INCHES (mm)	HEAT TREAT SEE DETAILS	DRAWN JPM	CHECKED JPM		DATE 08/21/2020
	ANGULAR MACHINED: $\pm 1.0^\circ$ FRACTIONAL: $\pm 0.015$ TWO PLACE DECIMAL: $\pm 0.010$ THREE PLACE DECIMAL: $\pm 0.005$ FOUR PLACE DECIMAL: $\pm 0.0005$ CONCENTRICITY: $0.0025$ T.I.R.	FINISH NONE	MFG APPR.	QC APPR.		COMMENTS:
	ALL HOLES TO BE LOCATED ON CENTERLINE (C) WITHIN .005 T.I.R. INTERPRET GEOMETRIC TOLERANCES I.A.W. ASME Y14.5	SIZE <b>A</b>	DWG. NO. UJ-HD2500x35-140	REV <b>A</b>		SCALE: 1:1